

# VALE BALLROOM

LOWER LEVEL

4,096 SQ FT

Our largest and most versatile space, Vale Ballroom features a 23-foot-high ceiling, multi-purpose alcove, and separate dressing room.

It is suitable for any type of event, from off-site retreats and weddings, to galas and performances.

## SETTING

## CAPACITY

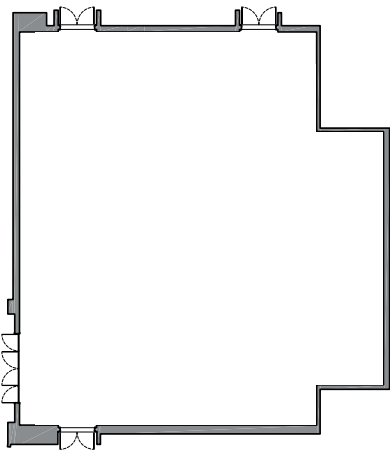
Max Capacity	320
Seated Rounds and Long Tables	240
Seated with Dance Floor	220
Seated with Stage, Dance Floor	220
Crescent Rounds	150
Classroom, 3 per 6	150
Standing	320

## DIMENSIONS

64' x 69'



Photo by Billy Santos



\*Custom floor plans are provided by our event team upon request.

# THE FOYER

LOWER LEVEL

2,052 SQ FT

The Foyer is an expansive and elegant space adjacent to the Vale Ballroom, making it the perfect gathering place for guests before or after an event. The dramatic entry way opens up to the lobby, adding a fluid transition to any event.

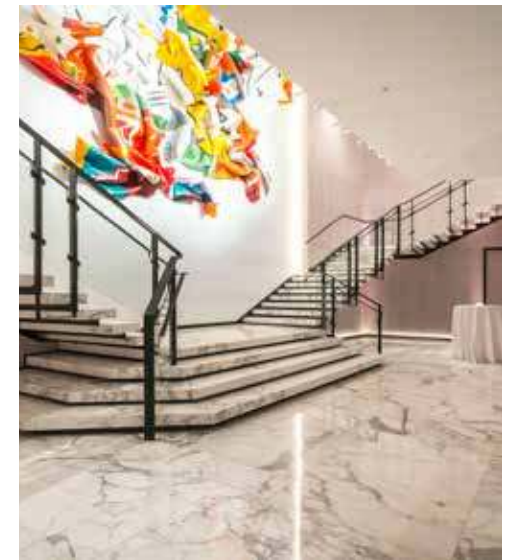
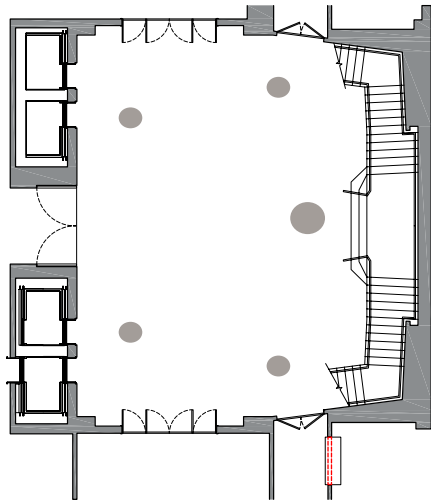
SETTING	CAPACITY
Standing	180
Theatre	160

DIMENSIONS	51' x 43'
------------	-----------

CEILING HEIGHT	13'
----------------	-----



*\*Custom floor plans are provided by our event team upon request.*