

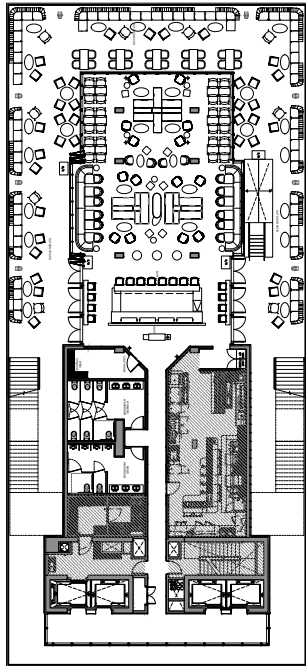
WESTLIGHT

LEVEL 22

6,855 SQ FT

This breathtaking indoor-outdoor cocktail bar is perched atop the 22nd floor, providing guests with panoramic views of Manhattan, Brooklyn, and Queens. The bar program, led by General Manager, Maura McGuigan, presents a dynamic menu of original and classic cocktails alongside rare spirits, craft beer and wine, while Chef Andrew Carmellini's menu of small plates reflects inspiration from global street food.

Featuring an expansive indoor lounge with floor-to-ceiling windows and wraparound balcony, Westlight is ideal for daytime gatherings, wedding ceremonies, and cocktail receptions.



SETTING

- Indoor - Seated
- Indoor/Outdoor - Standing
- Indoor/Outdoor - Seated

CAPACITY

- 100
- 250
- 220

DIMENSIONS

70' x 156'

**Custom floor plans are provided by our event team upon request.*



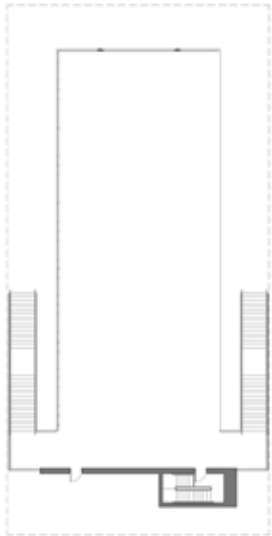
The William Vale
BROOKLYN

UPSTAIRS AT WESTLIGHT

ROOFTOP

4,840 SQ FT

This spectacular outdoor area is situated directly atop Westlight, providing guests with an incredible, unobstructed panorama of the five boroughs and beyond. Upstairs at Westlight is a spectacular setting for cocktailing, ceremonies or fashion events.



SETTING

Max Capacity

DIMENSIONS

CAPACITY

240

44' x 112'